

Attachment clamp mountings

Aluminium

SPECIFICATION

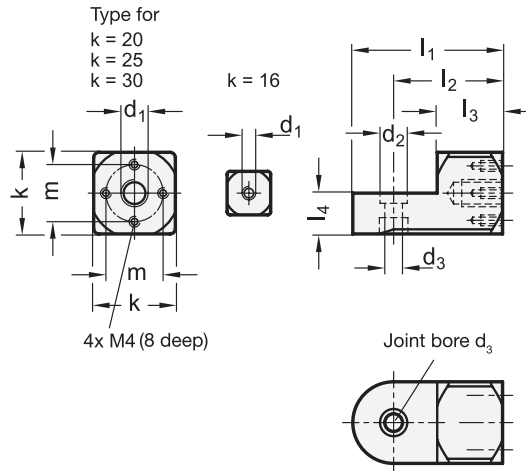
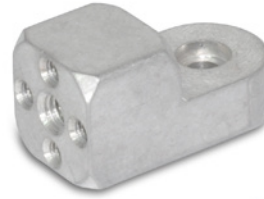
Aluminium

- matt, slide ground **MT**
- anodized black **ELS**

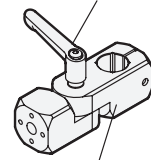
INFORMATION

Attachment clamp mountings GN 484 are primarily designed for mounting sensor holders GN 479 (see page 1895) and retaining plate GN 479.1 (see page 1896). They are fitted with a central thread and for the size with $k = 20$ and higher, an additional bore template $4 \times M4$.

Using swivel clamp mountings GN 482 (see page 1890) and T-Swivel clamp mountings GN 483 (see page 1891) with the same k dimensions, attachment clamp mountings GN 484 are easily combined into articulated swivel clamp mounting joints. Clamping kits GN 511.1 (see page 1894) with screw, type S and adjustable hand lever, type K are available for this purpose (description see table of dimensions).



Swivel clamp mounting joint with clamping kit GN 511.1, type K



Swivel clamp mounting GN 482, type P

Clamping kit GN 511.1, Type S



* Complete with Finish of the Attachment clamp mountings (MT or ELS)

- MT** matt, slide ground
ELS anodized, black

GN 484

Description	d1	k	d2	d3	l1	l2	l3	l4	m	Clamping kits for d3 Type S	Clamping kits for d3 Type K	⚖️
GN 484-M5-16-*	M5	16	7	4.5	30	22	13	8	-	GN 511.1-M4-16-S	GN 511.1-M4-16-K	12
GN 484-M6-16-*	M6	16	7	4.5	30	22	13	8	-	GN 511.1-M4-16-S	GN 511.1-M4-16-K	12
GN 484-M8-16-*	M8	16	7	4.5	30	22	13	8	-	GN 511.1-M4-16-S	GN 511.1-M4-16-K	11
GN 484-M6-20-*	M6	20	8.5	5.5	38	28	17	10	14	GN 511.1-M5-20-S	GN 511.1-M5-20-K	24
GN 484-M8-20-*	M8	20	8.5	5.5	38	28	17	10	14	GN 511.1-M5-20-S	GN 511.1-M5-20-K	23
GN 484-M8-25-*	M8	25	10	6.5	46	33.5	20	12.5	17	GN 511.1-M6-25-S	GN 511.1-M6-25-K	46
GN 484-M10-25-*	M10	25	10	6.5	46	33.5	20	12.5	17	GN 511.1-M6-25-S	GN 511.1-M6-25-K	45
GN 484-M8-30-*	M8	30	10	6.5	55	40	24	15	20	GN 511.1-M6-30-S	GN 511.1-M6-30-K	84
GN 484-M10-30-*	M10	30	10	6.5	55	40	24	15	20	GN 511.1-M6-30-S	GN 511.1-M6-30-K	82
GN 484-M12-30-*	M12	30	10	6.5	55	40	24	15	20	GN 511.1-M6-30-S	GN 511.1-M6-30-K	80

Weight ELS